



187 Crosby Road
Dover, New Hampshire USA 03820
(603) 742-7095
www.telpar.com

Telpar Network Configuration Instructions for the following:

MTP-2283

MTP-2242

MTP-2832

MTP-2822

Introduction

This procedure describes how to use the Configuration Utility to configure a Telpar Network Printer and install a Telpar Network Printer driver.

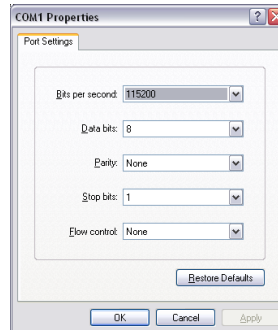
Configuring the Printer

The printer must be configured to a valid IP address available on the network. The Configuration Utility is used to perform this. This is within the firmware of the printer. To enter the Configuration Utility and make changes to the printer follow the procedure below.

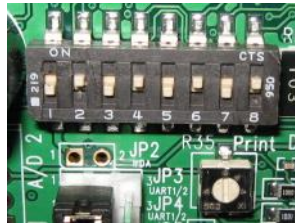
1. Connect a serial cable between a Windows PC and J9 on controller board.



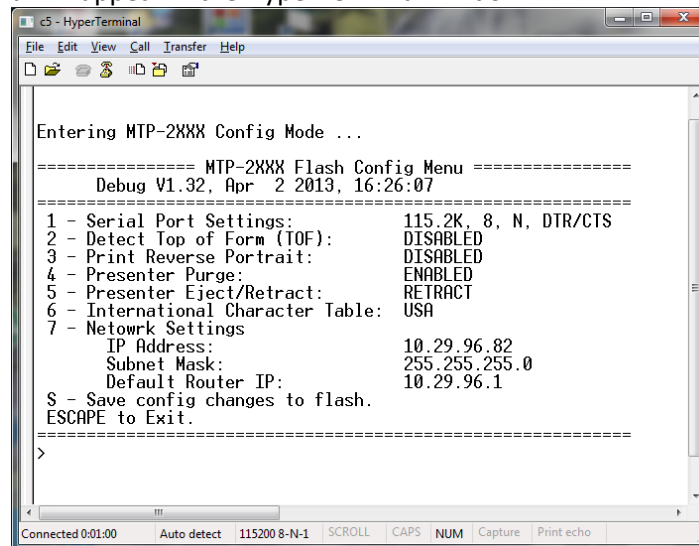
2. Start a serial terminal program such as HyperTerminal with settings at 115,200-N-8-1.
 - a. Start > Programs > Accessories > Communications > HyperTerminal
 - b. Name Configuration
 - c. Select Comm Port
 - d. Configure port settings
 - i. 115,200 Baud
 - ii. 8 Data bits
 - iii. No Parity
 - iv. Flow Control – None



3. Set Printer Switch 1 Position 8 to ON.

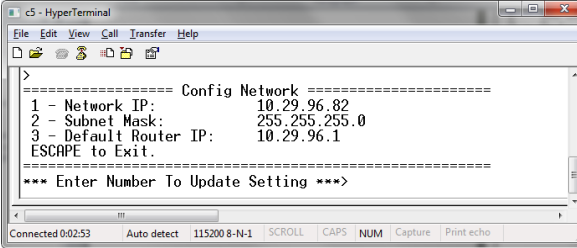


4. Turn the printer power on.
 - a. Printer LED's 1 (green) and LED 4 (Red) will be blinking and the beeper will sound a beep every 2 seconds.
 - b. A Menu will appear in the HyperTerminal window.



5. To change a setting enter the number to the left of the setting.
 - a. Enter "7" to change the Network Settings.

- b. The following menu will appear.



```
cS - HyperTerminal
File Edit View Call Transfer Help
===== Config Network =====
1 - Network IP:      10.29.96.82
2 - Subnet Mask:    255.255.255.0
3 - Default Router IP: 10.29.96.1
ESCAPE to Exit.
=====
*** Enter Number To Update Setting ***>
```

- c. Enter a number to change the desired setting.
6. Enter 'Escape' to return to the main menu.
 7. **IMPORTANT!** Once completed with changes enter "S" to save the changes to flash memory.
 8. Turn power off.
 9. Restore Switch 1 position 8 to the OFF position.
 10. Print a Self-Test to verify settings and printer operation.
 - a. Hold Feed Button while turning printer power on.
 - b. Release Feed button after one beep.
 - c. Self-Test printout example:

Installing the Telpar Network Printer Driver

The Telpar Network Printer driver is available on the Telpar web site, www.telpar.com.
http://www.telpar.com/Drivers_and_Support/MTP-2000_Drivers.aspx

1. Download the printer driver from the Telpar web site and unzip to a location you will remember.
 - a. Be sure to download a network printer driver.

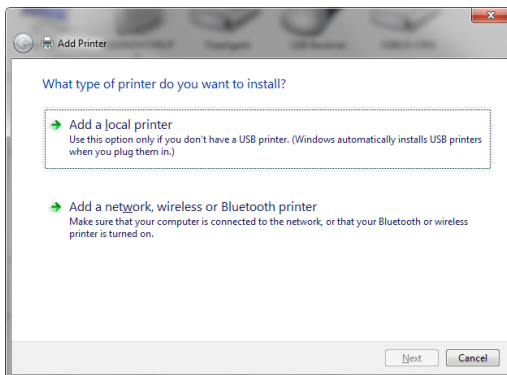
Windows 32-Bit Network Drivers

MTP-2822N x86 Network Printer Driver
MTP-2832N x86 Network Printer Driver
MTP-2242N x86 Network Printer Driver
MTP-2283N x86 Network Printer Driver
MTP-MINIS x86 Network Printer Driver

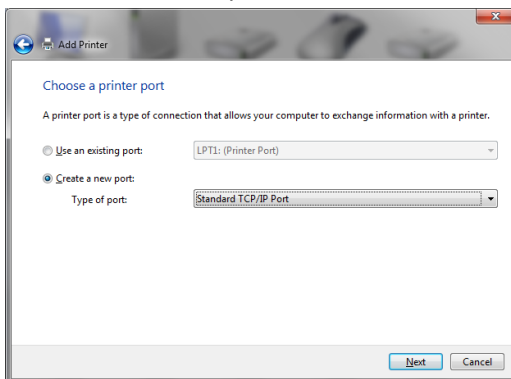
Windows 64-Bit Network Drivers

MTP-2822N x64 Network Printer Driver
MTP-2832N x64 Network Printer Driver
MTP-2242N x64 Network Printer Driver
MTP-2283N x64 Network Printer Driver
MTP-MINIS x64 Network Printer Driver

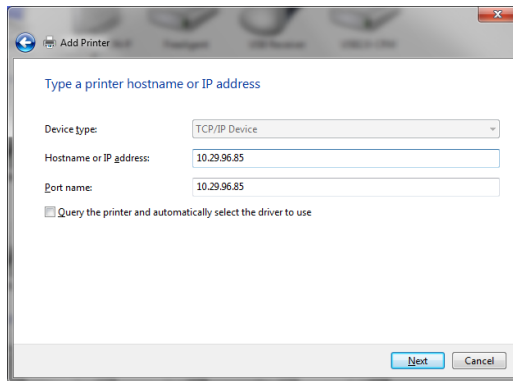
2. Open 'Devices & Printers' and select 'Add a Printer'



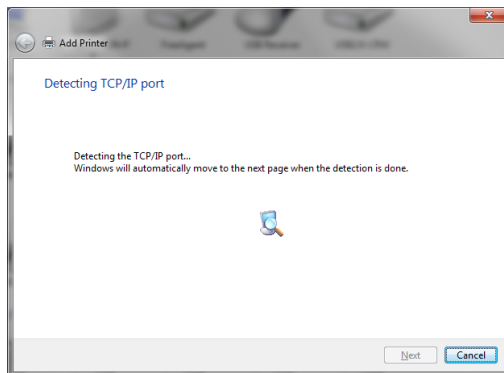
3. Select 'Add a local printer'



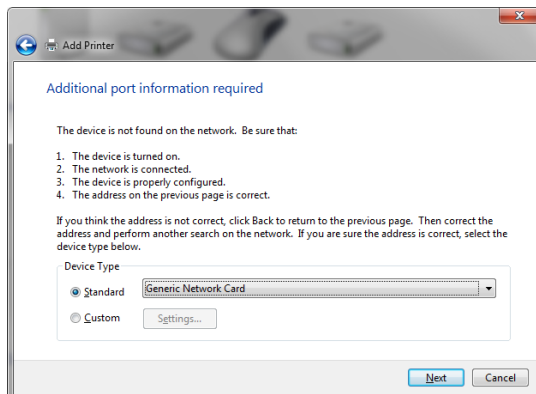
4. Select 'Create a port'
5. Choose 'Standard TCP/IP Port' for 'Type of port:'
6. Select 'Next'



7. Enter the printers IP address in the 'Hostname or IP Address field'.
 - a. For example, 10.29.96.85 was entered above.
8. Select 'Next'
9. Windows will attempt to detect the printer at the selected port.

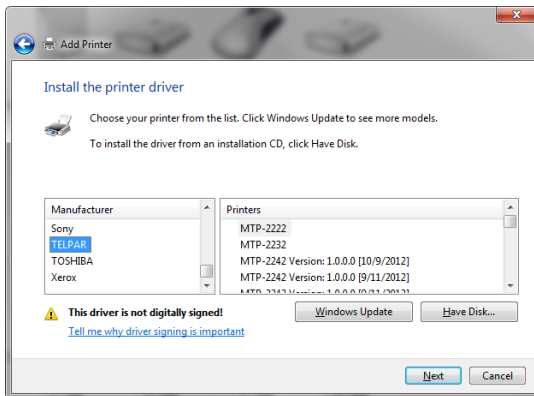


10. The following will be displayed.

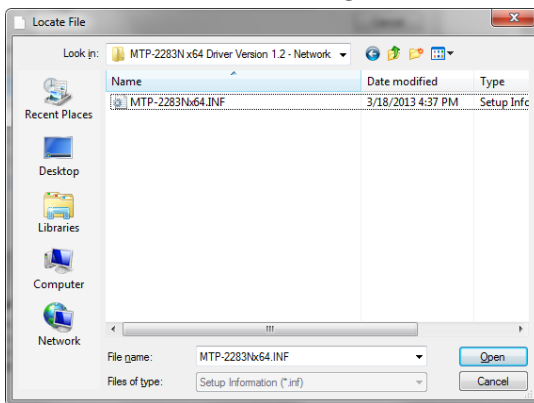


11. Select 'Next'

12. The following will be displayed:

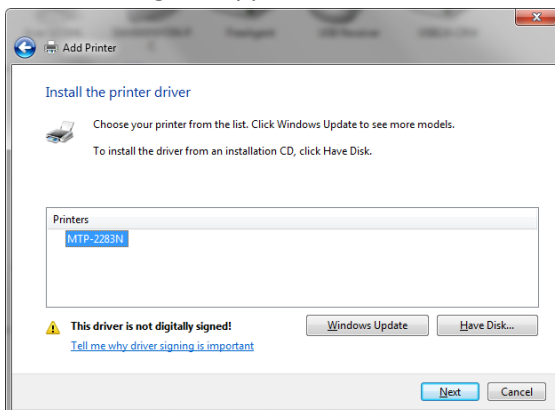


13. Select 'Have Disk...' and navigate to the location the driver was unzipped.



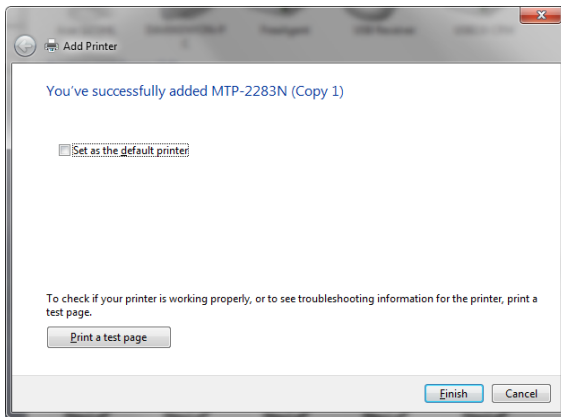
14. Select the appropriate .INF file and click 'Open' and then 'Next'.

15. The following will appear:



16. Select the desired printer and click 'Next'

17. Select the desired options and click 'Next' until the following appears:



18. Click 'Print a test page' if desired.

19. Click 'Finish'